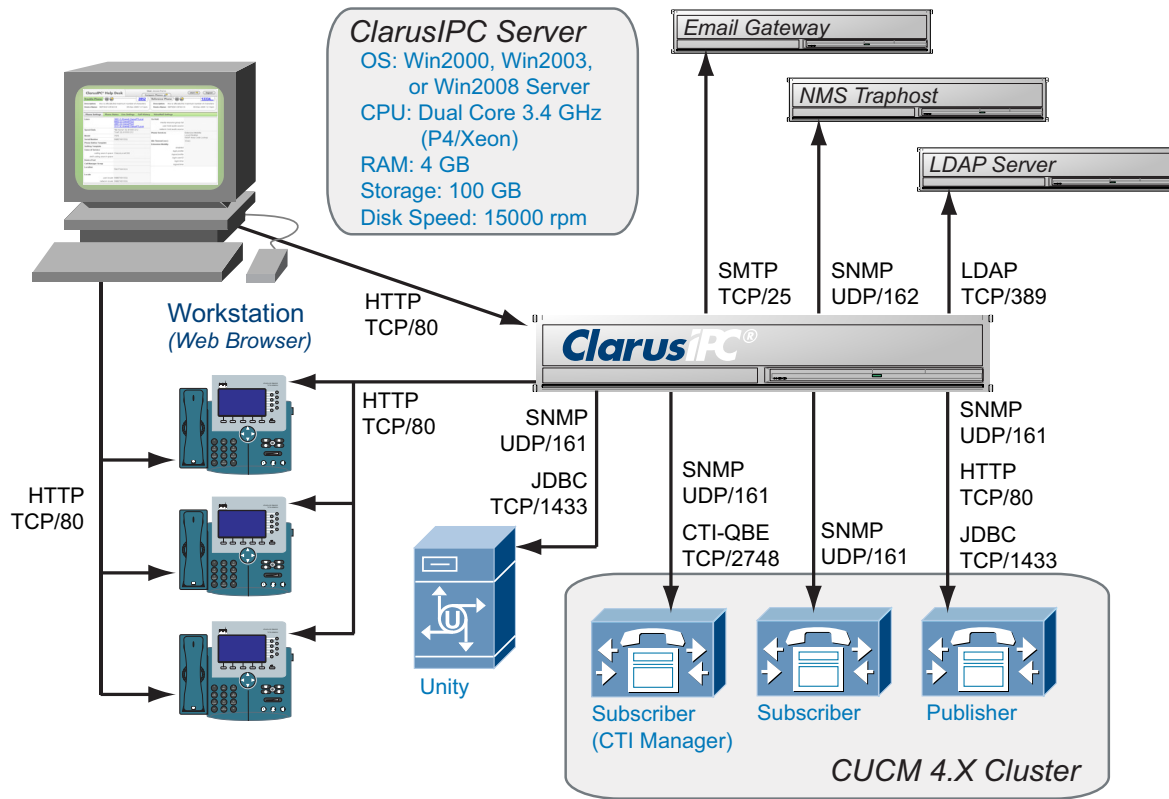
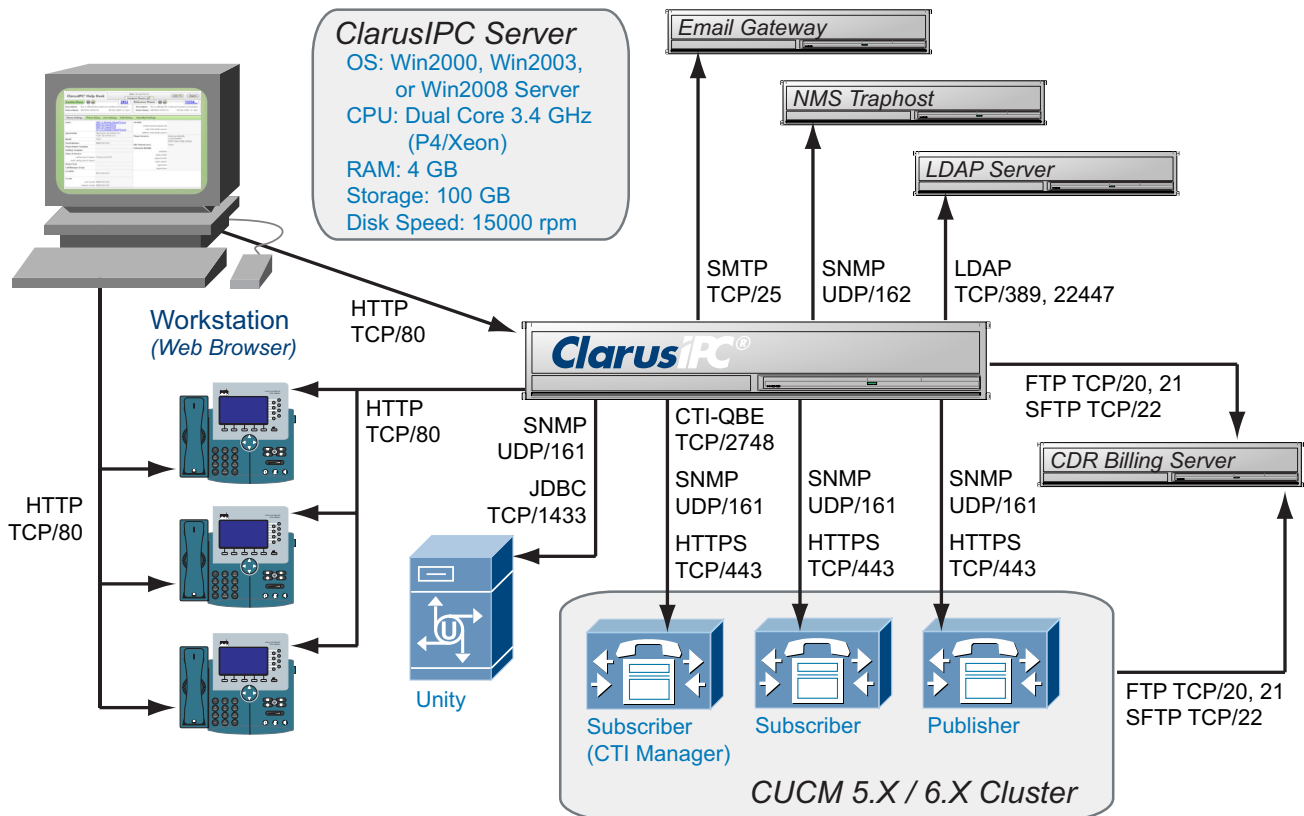


ClarusIPC[®] v2.5 Network Connectivity Requirements



ClarusIPC Network Connectivity Requirements for Cisco Unified Communications Manager 4.X



ClarusIPC Network Connectivity Requirements for Cisco Unified Communications Manager 5.X and 6.X

ClarusIPC Fields	Required for CUCM		Cluster Definition Parameters
	4.X	5.X+	
CUCM Server Settings			Defines Cisco Unified Communications Manager settings.
Company Name	X	X	Name of the company at which the Cluster is installed.
Cluster Name	X	X	User-defined name; must be unique within the company.
Description	X	X	User-defined description.
Publisher IP Address	X	X	IP address of Publisher CUCM.
SNMP Community String	X	X	Read-only SNMP community string on all CUCM servers.
CTI Manager Address	X	X	IP address of the CUCM server running CTI Manager Service.
CUCM User ID	X		CUCM username with the following credentials: <ul style="list-style-type: none"> • Enable CTI Super Provider. • Enable CTI Application Use. • Call Park Retrieval Allowed.
CUCM User ID		X	CUCM username with the following credentials: <ul style="list-style-type: none"> • Must be a member of the Cisco Standard CTI Allow Control of All Devices and Standard CTI Enabled groups. • Enable CTI Application Use. • Call Park Retrieval Allowed.
CUCM User Password	X	X	CUCM username password.
CUCM Admin ID	X		CUCM Administrator user ID or LDAP user ID when MLA is enabled.
CUCM Admin Password	X		CUCM Administrator password or LDAP password when MLA is enabled.
CDR Settings Enable			Enables use of CDR parameters.
Database User ID	X		SQL server user with read-access for the CDR database.
Database Password	X		Password for SQL server user.
CDR IP Address	X		IP address of CDR database server.
(S)FTP User ID		X	(S)FTP User with Read/Write/Delete access to the directory where CDR/CMR records are to be written.
(S)FTP User Password		X	Password for the (S)FTP User ID.
(S)FTP Server IP Address		X	IP address of (S)FTP Billing server.
CDR (S)FTP Port		X	TCP port of (S)FTP Billing server.
Transfer Protocol		X	Transfer protocol for the Billing server: secure FTP (SFTP) or insecure FTP.
(S)FTP Directory Path		X	Absolute (S)FTP directory for the location of CDR files on the Billing server.
Collection Frequency	X	X	Frequency with which ClarusIPC will collect data from the (S)FTP server.
Expire Records Older Than			Number of days that CDR records will be saved.
KPI Settings Enable			Enables KPI record collection.
Collection Frequency	X	X	Frequency with which ClarusIPC will collect Key Performance Indicator counters, for use by Voice Monitor and Dashboard.
Enable MGCP PRI Channel Status Collection			Enables collection of status for all channels on all MCGP PRI Devices.